

Look out for exotic caulerpa

What is exotic caulerpa?

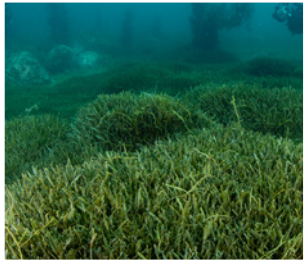
Exotic caulerpa is a highly invasive seaweed that's been found in a number of locations in the upper North Island.

It spreads rapidly, forming dense mats and potentially smothering our native species.



How does it spread?

Exotic caulerpa can break into little pieces and is easily carried on coastal currents or spread accidentally by people, tangled in anchors, anchor chains and fishing/diving gear.



If you see it, report it.

Exotic caulerpa is easily spread through small fragments so if you see it, leave it where it is.

THINK YOU'VE SEEN IT?



**TAKE A
PHOTO**



**RECORD YOUR
LOCATION**



**CALL
0800 80 99 66**

OR



**VISIT
report.mpi.govt.nz**

Stop the spread when boating, diving and fishing

If you find seaweed when you pull up your anchor or gear, put it back in the area it came from before you move.

If you find some on your boat or gear when you're already back at shore, put it in the household rubbish, making sure it doesn't get back in the sea.

For latest information: www.biosecurity.govt.nz/caulerpa